



**FIJI METEOROLOGICAL SERVICE
GOVERNMENT OF REPUBLIC OF FIJI**

MEDIA RELEASE No.71

4pm, Thursday, 19 April 2018

TD14F REMAINS SLOW MOVING NEAR ROTUMA

Tropical Disturbance 14F remains slow moving and was located approximately 70km east-northeast of Rotuma at 3pm today. It is expected to drift south and the chance of it developing into a Tropical Depression is now *low*.

TD14F is a compact system and anticipated to bring heavy rain and strong winds in some parts of the country but mostly over oceans. The associated cloud and rain affects the northern parts of the country and is anticipated to gradually spread to the rest of the Fiji Group. Increasing cloudiness, rain developing, becoming frequent & heavy with squally thunderstorms from tonight over Yasawa Group, Vanua Levu, Taveuni and nearby smaller islands, and the eastern and the interior parts of Viti Levu.

The system has a potential to produce more than 100mm of rainfall especially in areas of localized and frequent heavy rain tomorrow and on Saturday. Therefore, there is medium to high risk of flash flooding of low lying areas with the forecasted rainy conditions for the rest of the week and leading into the weekend.

The risk of flooding of low lying and flood prone areas can be higher with the prediction of a high tide of about 2 meters this week. In anticipation of this, the following alerts and warnings are currently in force:

1. A “**Heavy Rain Warning**” for Yasawa Group, Vanua Levu, Taveuni and nearby smaller islands, Northern Lau Group, the eastern parts and interior of Viti Levu;
2. A “**Strong Wind Warning**” remains in force for land areas and waters of Fiji and Rotuma;
3. A “**Heavy Rain Alert**” in force for all rest of Fiji;

Expect fresh to strong southeast winds with average speed from 40 to 55km/hr and gusting to 65km/hr over land areas. Over Waters, 20 to 25knots and gusting to 35knots with rough seas and moderate southerly swells.

All communities living in low coastal, flood prone and low lying areas are reminded to take all necessary precautions, similarly for those living in landslide prone areas to remain vigilant. Members of the public are advised to remain updated with the latest weather information and take alerts and warnings seriously.

For more details and the latest on weather, please contact the National Weather Forecasting Centre on 6736006, 9905376 or visit the Fiji Meteorological Service's website, www.met.gov.fj. You can also visit the Fiji Meteorological Service official Facebook page for latest updates.

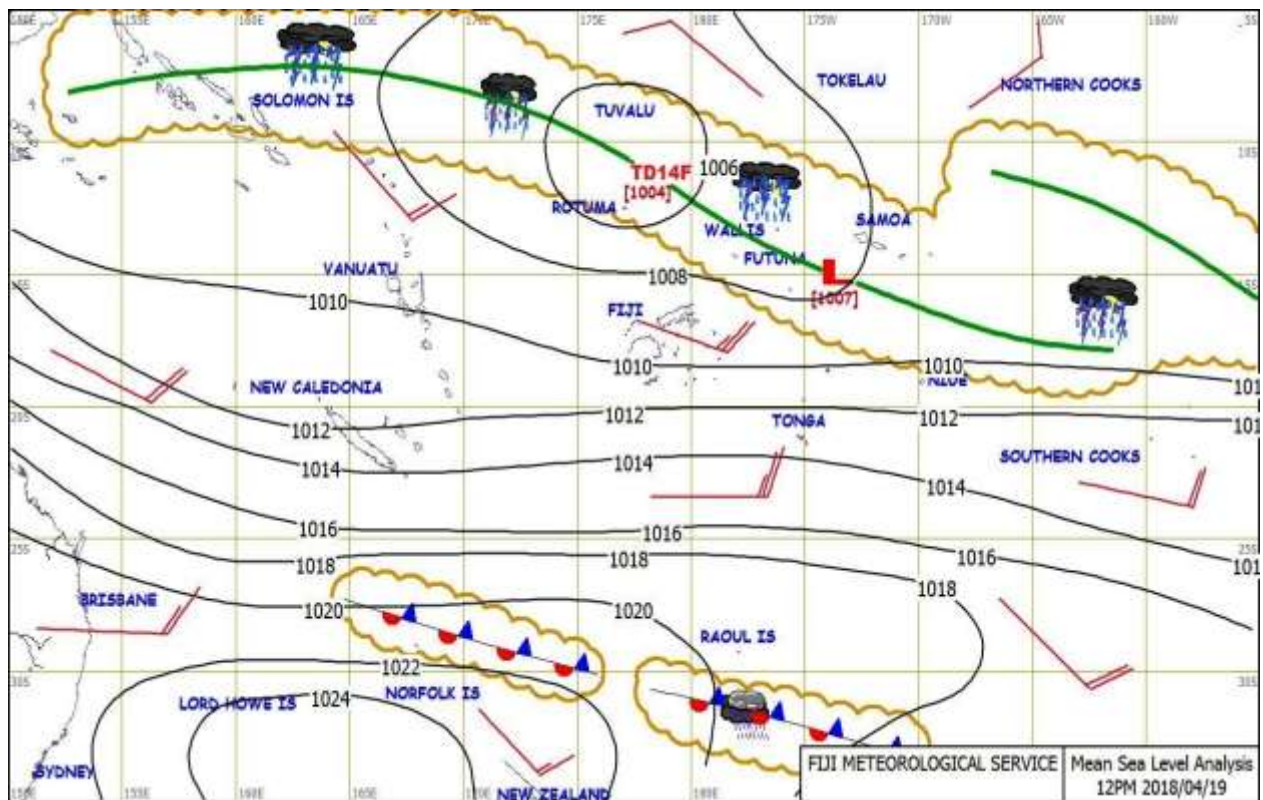


Figure 1: Weather Map at 12pm on 19 April 2018

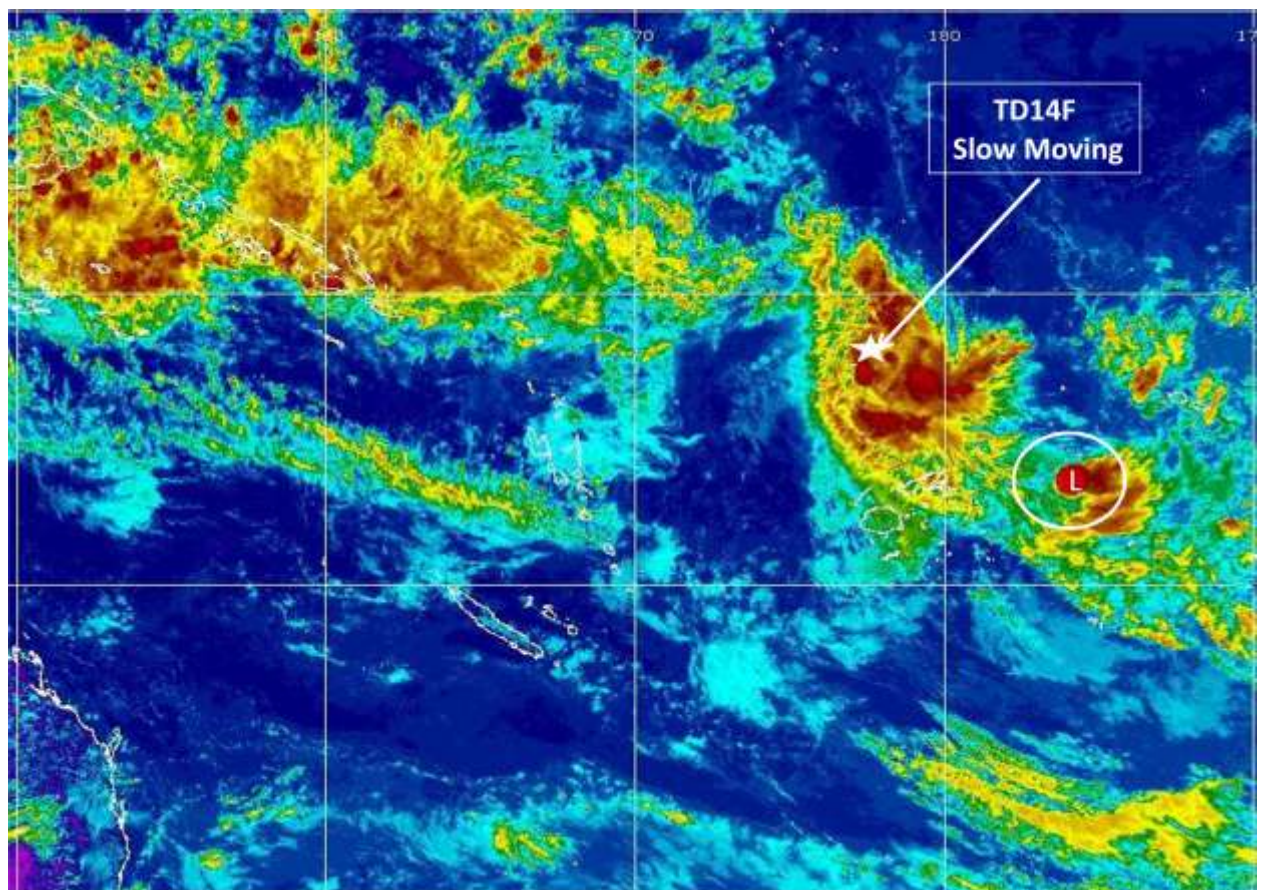


Figure 2: Satellite Map at 3pm on 19 April 2018

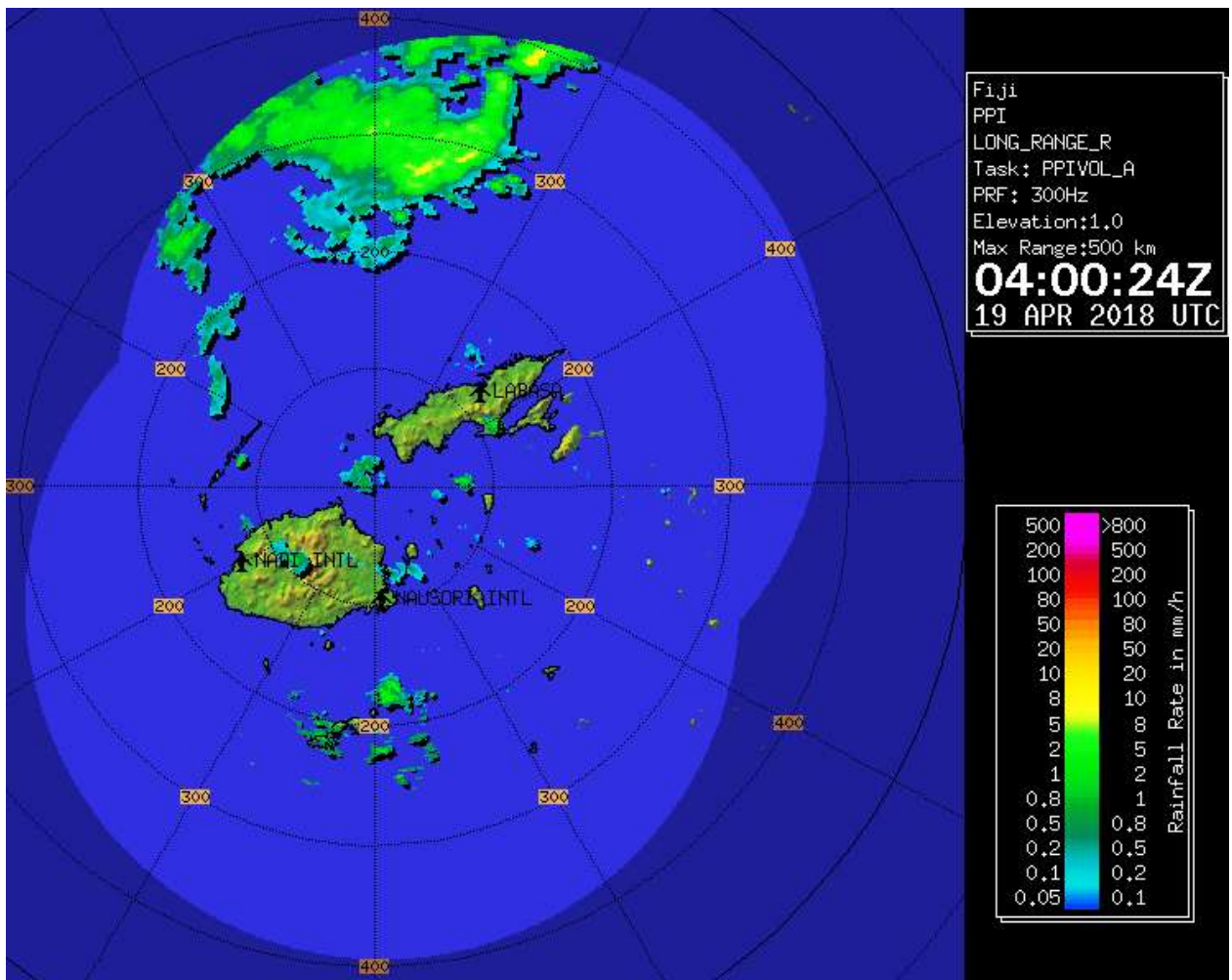


Figure 3: Radar Image at 4pm on 19 April 2018.

Ends.