



# The Ministry Of Infrastructure & Transport

Nasilivata House  
87, Ratu Mara Road, Samabula  
Private Mail Bag, Suva, Fiji

Telephone: (679) 338 4111  
Facsimile: (679) 338 3198  
Website: [www.mwtpu.gov.fj](http://www.mwtpu.gov.fj)



## **MEDIA RELEASE No.5**

**10am Wednesday 8<sup>th</sup> February 2017**

### **ANOTHER ACTIVE TROUGH APPROACHING FIJI FROM THE WEST.**

Tropical Disturbance TD09F was located near 20.1 latitude South and 179.8 longitude West or about 240km southeast of Kadavu or about 290km South-southeast of Suva at 9am today. It is currently slow moving but expected to gradually move southeast further away from Fiji. It has low chance of developing into a tropical cyclone. However, associated active trough of low pressure with cloud and rain continues to affect the group. Therefore most parts of Fiji can expect periods of rain, heavy at times and squally thunderstorms to continue today and the following warnings and alert are currently in force:

- A “**Heavy Rain Warning**” remains in force for the whole of Fiji;
- A “**Strong Wind Warning**” remains in force for all Fiji Waters;
- A “**Strong Wind Warning**” remains in force for land areas of Lau and Lomaiviti Group;
- A “**Flood Warning**” remains in force for low lying areas and areas adjacent to Rakiraki River and Nadi River; and

“**Flood Alert**” remains in force for the low lying areas and small streams adjacent to Ba River, Emuri station and downstream of Semo River and other major rivers for the whole of Fiji. The river levels are expected to fluctuate with rain continuing.

Strong northwest winds with average speeds of 40km/hr to 55km/hr with gusts of up to 75km/hr can be expected over land areas of Lau and Lomaiviti Group while moderate to fresh northwest winds, strong and gusty at times elsewhere.

*Meanwhile, another active trough of low pressure with embedded tropical disturbance currently lies to the far west of Fiji and is moving towards the group. It is expected to affect the group from Friday.*

Significant amounts of rainfall have been recorded in the last 24 to 48 hours in the Western Division and risk of flooding over next 24 hours remains high as the ground is extremely saturated. An improvement in weather is anticipated for a brief period tomorrow as another spell of heavy rain is expected to affect the country from Friday due to the approaching trough from the East.

It is advisable that people take alerts, warnings and advisories seriously whenever it is issued and remain prepared at all times. The weather is being closely monitored over and updates will be provided as any significant changes are observed or expected.

For more details and the latest on weather, please contact the National Weather Forecasting Centre on 6736006, 9905376 or visit the Fiji Meteorological Service’s website, [www.met.gov.fj](http://www.met.gov.fj)

**ENDS.**

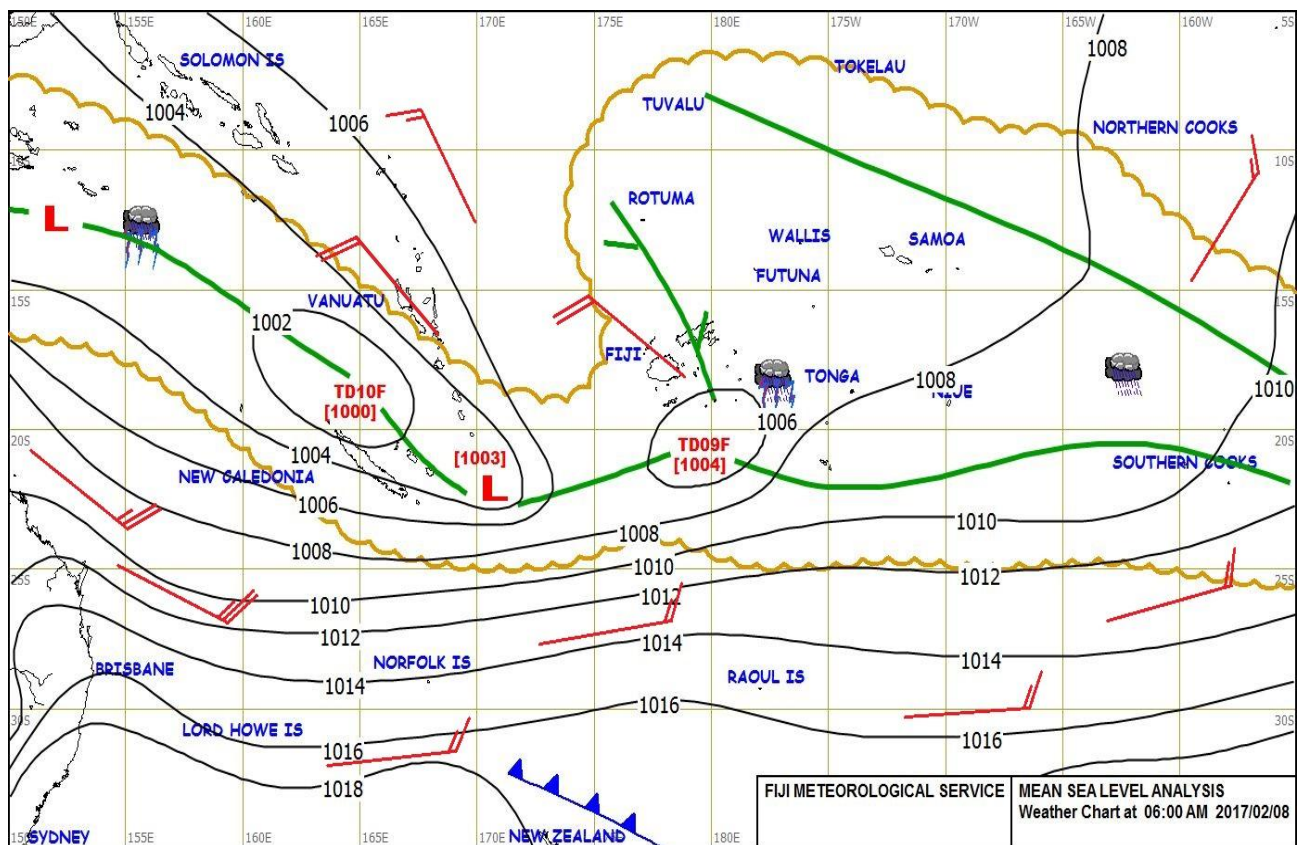


Figure 1: Weather Map at 6am on 8<sup>th</sup> February 2017.

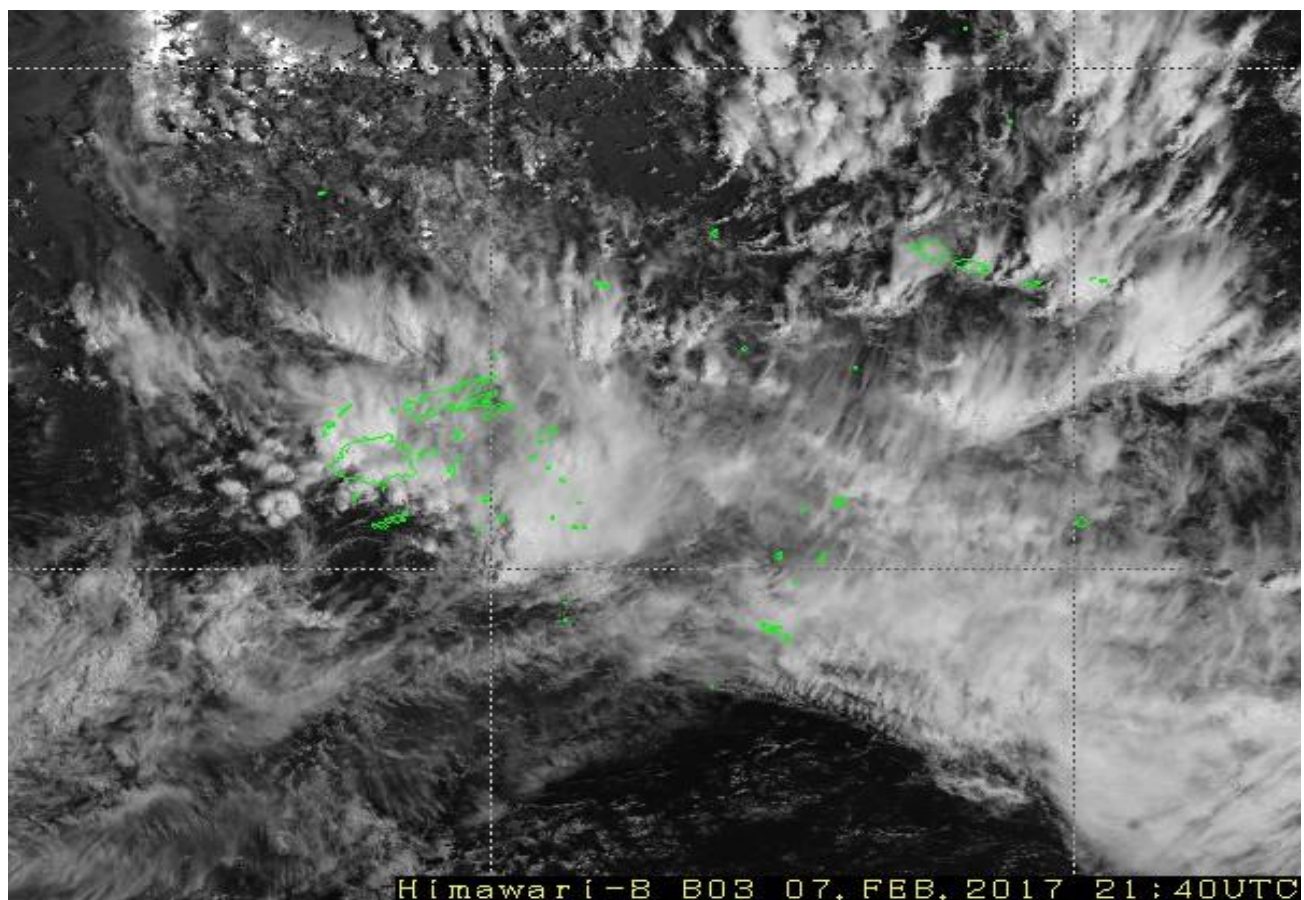


Figure 2: Satellite image at 9.40am (21.40UTC) on 08<sup>th</sup> February 2017.

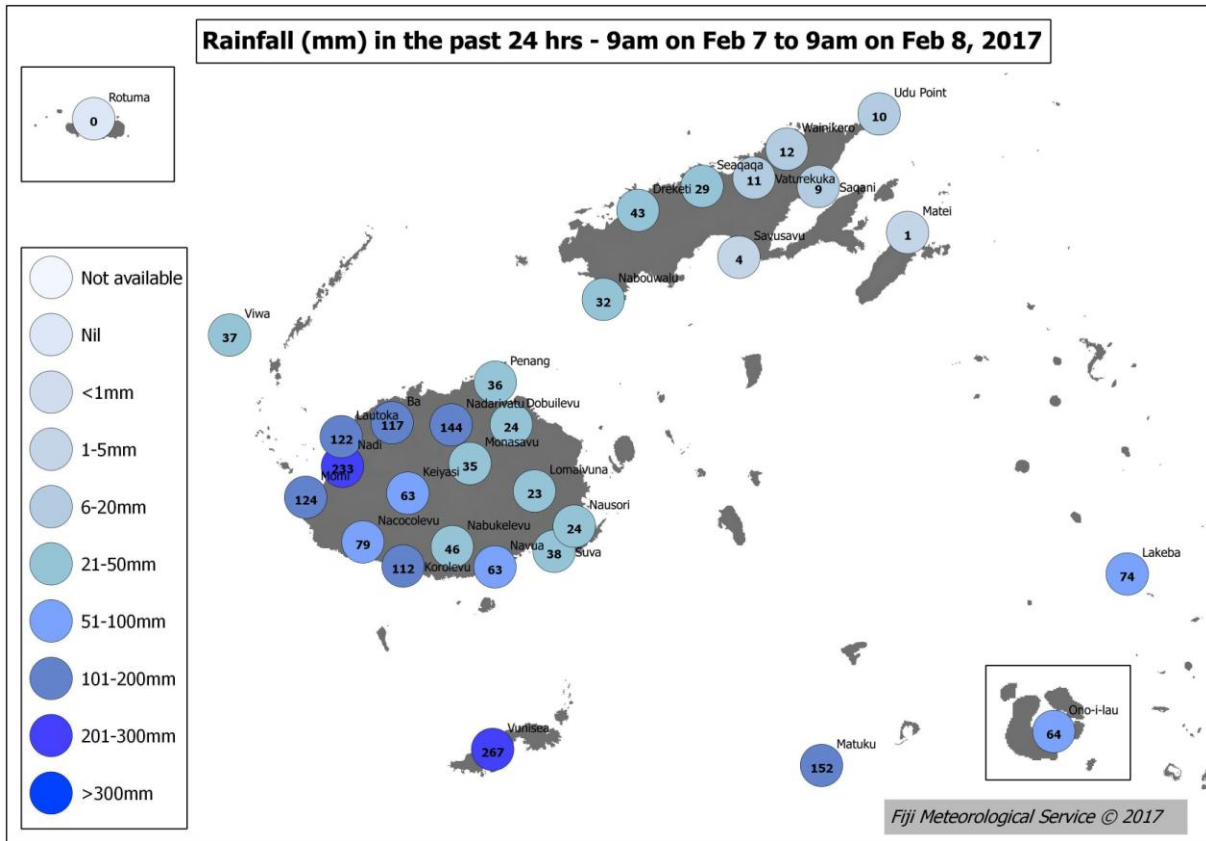


Figure 3: Rainfall for the past 24 hours from 9am yesterday to 9am this morning.

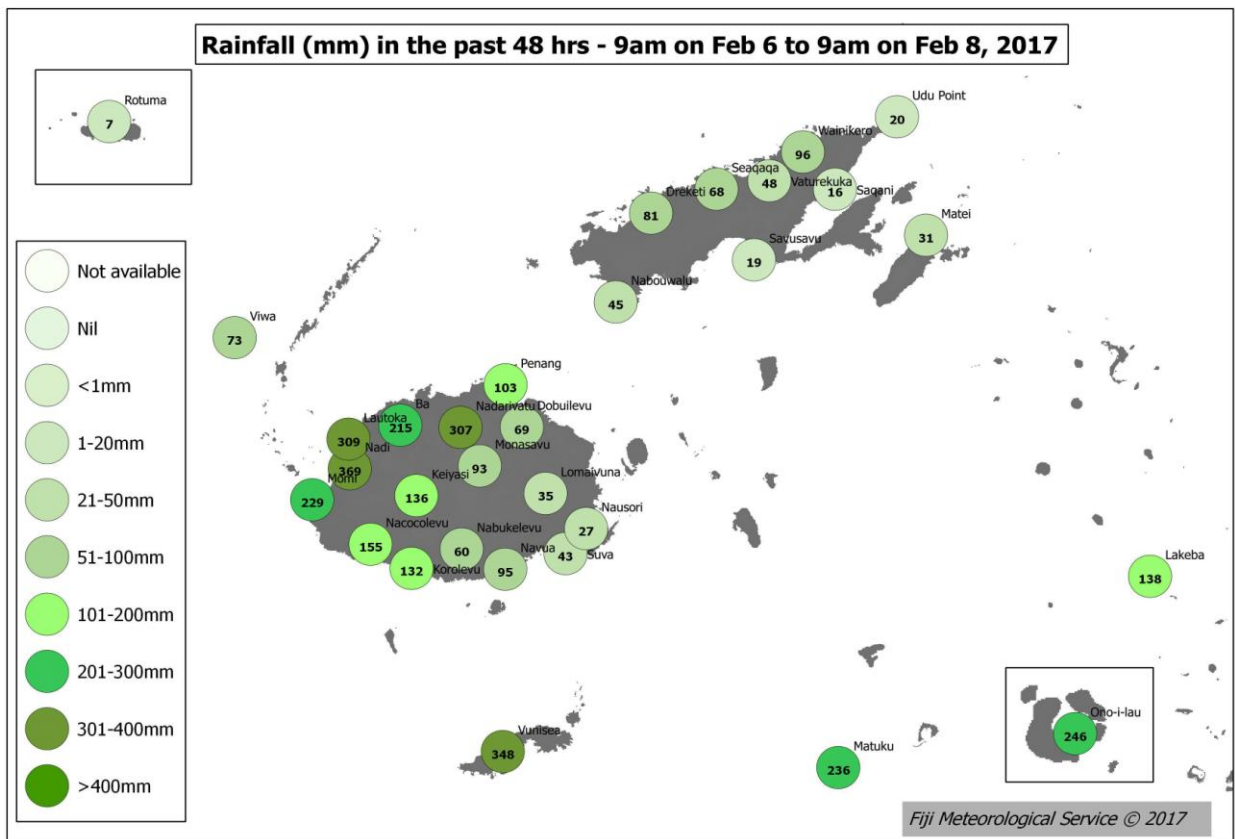


Figure 4: Rainfall for the past 48 hours from 9am on Monday to 9am this morning.

STATION	CATCHMENT	WATER LEVEL @10AM	ALERT LEVEL (m)	WARNING LEVEL (m)	STATUS
Nadi Bridge	Nadi	5.33	3.5	4.5	Decreasing
Votualevu	Nadi	7.36	4.5	6.0	Decreasing
Mulomulo	Nadi	2.8	4.0	6.0	Decreasing
Emuri	Tuva	4.79	4.0	6.0	Decreasing
Toge	Ba	6.0	4.0	6.0	Decreasing
Rakiraki	Nakauvadra	3.02	1.5	2.0	Increasing
Vatukacevaceva	Nakauvadra	0.90	1.0	1.5	Decreasing

Table 1: Water Levels at various monitoring stations are currently decreasing but expected to fluctuate as rains are expected to continue. Next high tide is around 4pm this afternoon.