



# The Ministry Of Infrastructure & Transport

Nasilivata House  
87, Ratu Mara Road, Samabula  
Private Mail Bag, Suva, Fiji

Telephone: (679) 338 4111  
Facsimile: (679) 338 3198  
Website: [www.mwtpu.gov.fj](http://www.mwtpu.gov.fj)



## **MEDIA RELEASE No.15**

**1pm on Tuesday 21<sup>st</sup> February 2017**

### **TD14F INTENSIFIES - HEAVY RAIN AND STRONG WIND WARNINGS REMAIN**

Heavy rain and strong winds are expected to continue today as active trough of low pressure associated with TD14F is anticipated to drift onto Vanua Levu. Associated cloud and rain currently affects the northern parts of the Group and gradually spread to other parts of Fiji later today.

TD14F has intensified to a Tropical Depression overnight and has moved closer to Fiji. TD14F was analysed near 16.4 latitude South and 179.1 longitude East or approximately 20km west of Labasa or 220km west-northwest of Vanuabalavu at 1pm this afternoon and moving south-eastwards at about 20km/hr. Even though, TD14F is now a Tropical Depression, it is not expected to develop into a Tropical Cyclone over Fiji Waters. Nonetheless, it will bring heavy rain and strong north-westerly winds over the northern parts of the country. In anticipation of the above, the following warnings and alerts remain in force:

- A “**Heavy Rain Warning**” remains in force for Vanua Levu, Taveuni and the nearby smaller islands, Lau and Lomaiviti Group Eastern Viti Levu and Yasawa Group;
- A “**Strong Wind Warning**” remains in force for land areas of Yasawa Group, Vanua Levu, Taveuni and nearby smaller islands, Lau and Lomaiviti Group;
- A “**Strong Wind Warning**” remains in force for all Fiji Waters; and
- A “**Heavy Rain Alert**” is remains in force for rest of Fiji.
- A “**Flood Alert**” is now in force for low lying areas and small streams to major rivers for the eastern Viti Levu, Vanua Levu and Taveuni.

Expect periods of rain, heavy at times with squally thunderstorms over Vanua Levu, Taveuni and the nearby smaller islands, Lau and Lomaiviti Groups, Eastern Viti Levu and Yasawa Group.

Elsewhere, expect occasional showers and few thunderstorms. Showers expected to increase to rain and become frequent and heavy with squally thunderstorms from later today.

Mariners can expect clockwise winds 20 to 30 knots, gusting to 40 knots with rough to very rough seas with moderate northwesterly swells.

All communities are advised to remain alert as localised heavy rain over short period of time can cause flash flooding in low lying areas and areas prone to flooding. General public is requested to take alerts, warnings and advisories seriously whenever it is issued and remain prepared at all times.

For more details and the latest on weather, please contact the National Weather Forecasting Centre on 6736006, 9905376 or visit the Fiji Meteorological Service’s website, [www.met.gov.fj](http://www.met.gov.fj)

**ENDS.**

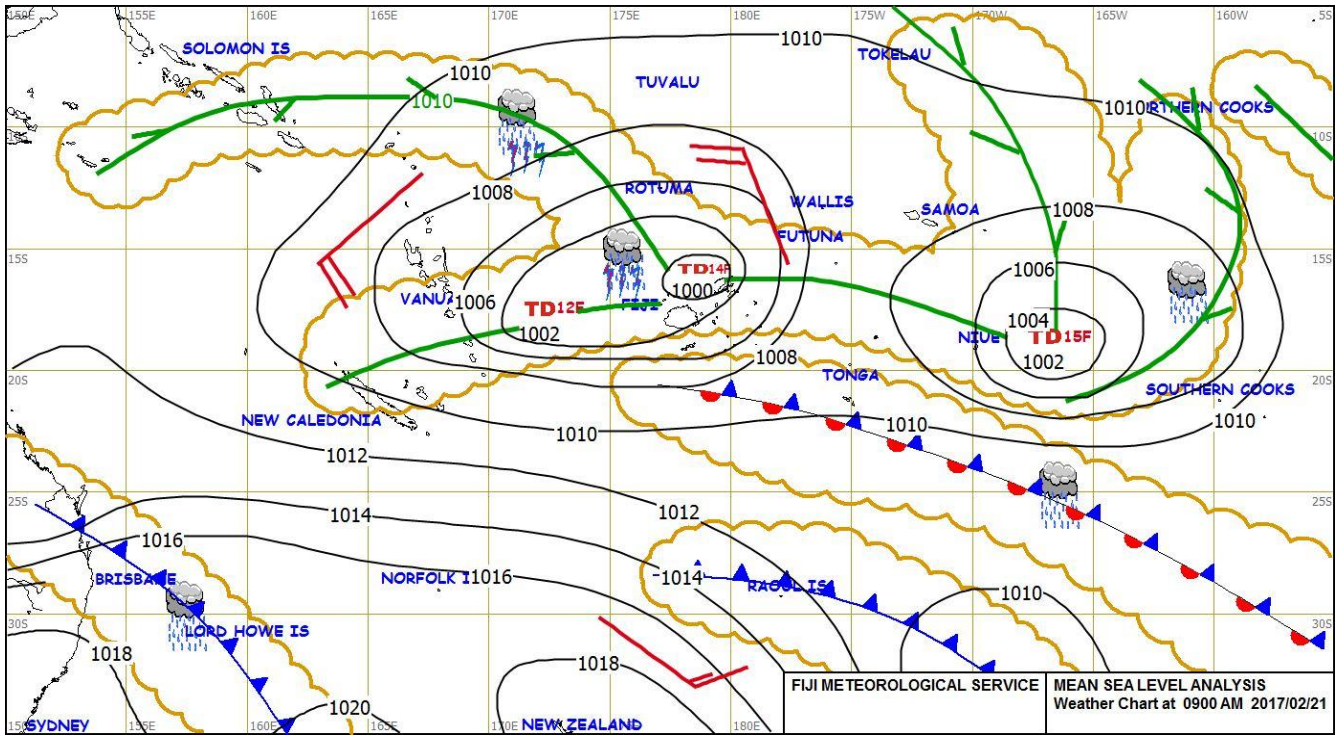


Figure 1: Weather Map at 9.00am today 21 February 2017.

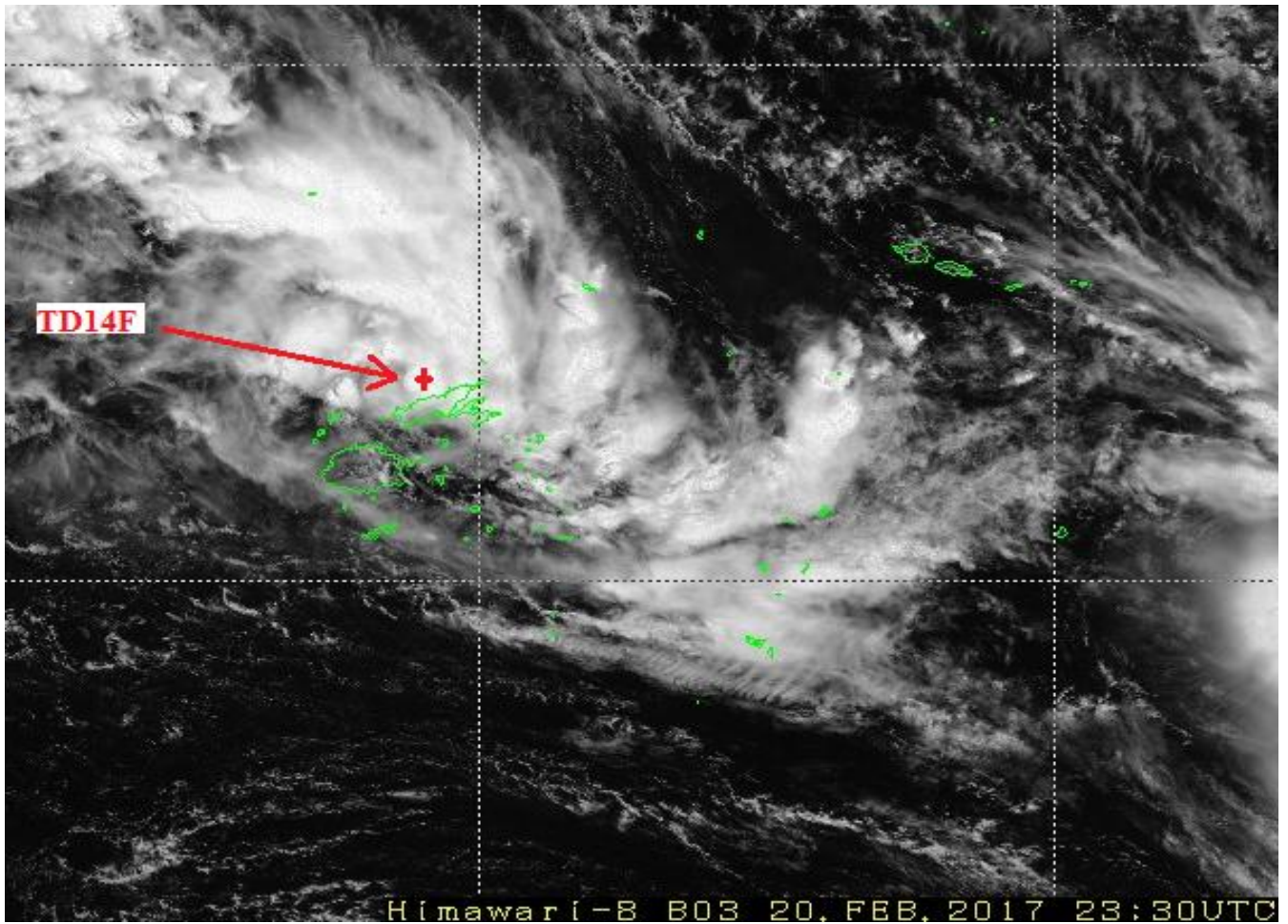


Figure 2: Satellite image at 11.30am on 21st February 2017.